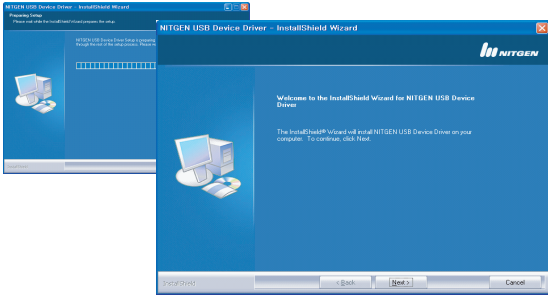
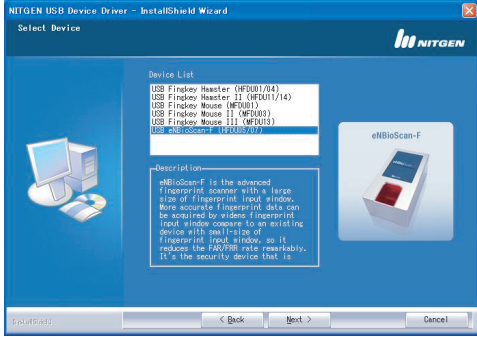


## •USB Driver Installation

1. Prior to beginning the installation, please close all applications that are running.
2. Do not plug in the Device until after the drivers have been installed on your system.
3. Insert the Installation CD in your CD-ROM drive. The installation program will start automatically.
4. Follow the instructions presented by the InstallShield Wizard during the driver installation process.



5. Select the device you are using and click “Next”.

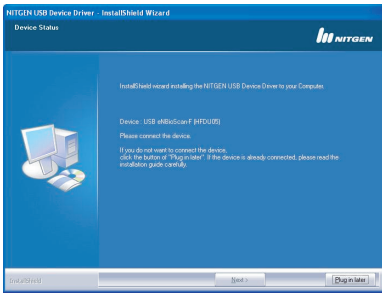


I-1

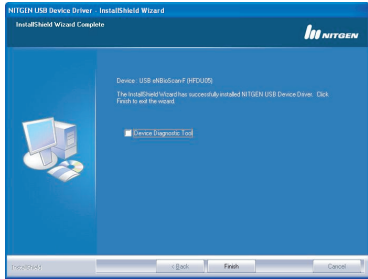
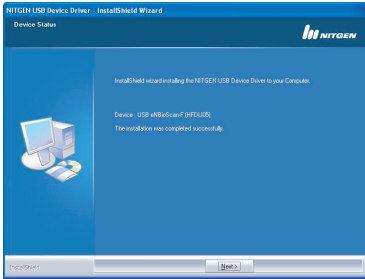
# Quick Start User Guide

## •USB Driver Installation

6. When driver installation is completed, it is necessary to check the device status to ensure that it was installed correctly. You will be prompted to connect the Device as shown in the diagram below:



7. Connect the Device to the USB port, and wait a moment. You can also click “Plug in later” to install it at a later time.
8. When the device installation process is completed, a window will be displayed indicating that “The installation was completed successfully.” Click the “Next” button.
9. Check the ‘Device Diagnostic Tool’ check box and click “Finish”. At this time the installation process will be completed, and the hardware test utility will be run automatically.



I-2

# Quick Start User Guide

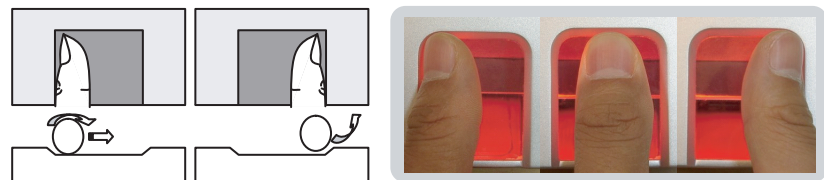
## •Capturing a fingerprint

1. Flat fingerprint
  - To maximize the contact area for a fingerprint core capturing and press the surface evenly.



2. Roll fingerprint (Only roll type device)

- Move the finger to the left side and then roll the finger toward the right. Lift the finger toward the right-hand side once you finish rolling it.

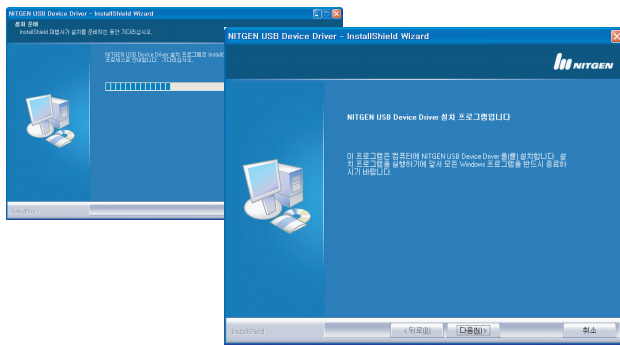


I-3

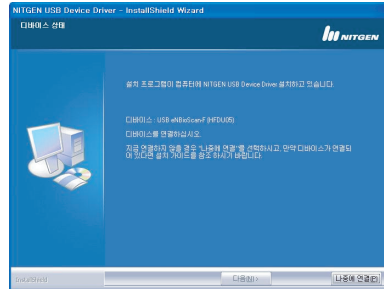
# Quick Start 사용자 가이드

## •USB 드라이버 설치하기

1. 드라이버를 설치하기 전 실행중인 Windows 프로그램을 모두 종료하시기 바랍니다.
2. 드라이버를 설치하기 전에 지문 인식기를 시스템에 연결하지 마시기 바랍니다.
3. 설치 CD를 CD-ROM 드라이브에 넣으면 설치 프로그램이 자동으로 실행됩니다.
4. 드라이버 설치를 위한 설치마법사 프로그램 실행 화면이 나타납니다.



5. 설치할 디바이스를 선택하고 “다음” 버튼을 누르십시오.

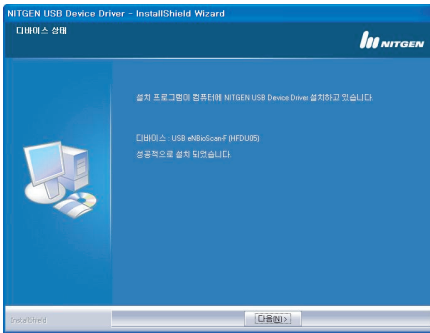


II-1

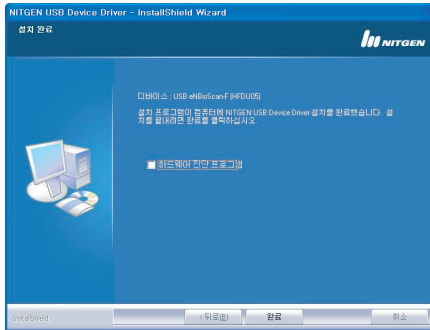
# Quick Start 사용자 가이드

## •USB 드라이버 설치하기

6. eNBioScan-F를 USB 포트에 연결하고 잠시 기다리십시오. “나중에 연결” 버튼을 눌러 관련 파일을 나중에 설치할 수도 있습니다.



7. 디바이스 설치가 끝나면 설치결과를 알려주는 아래의 대화상자가 나타납니다. “다음” 버튼을 누르십시오.
8. \*하드웨어 진단프로그램\* 옵션을 선택하고 “완료” 버튼을 누르면 설치가 종료되면서 하드웨어 진단 프로그램이 자동으로 실행됩니다.



II-2

# Quick Start User Guide

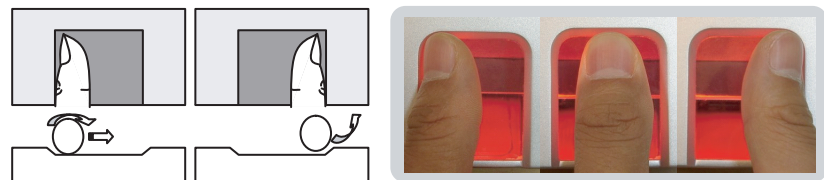
## •Capturing a fingerprint

1. Flat fingerprint
  - To maximize the contact area for a fingerprint core capturing and press the surface evenly.



2. Roll fingerprint (Only roll type device)

- Move the finger to the left side and then roll the finger toward the right. Lift the finger toward the right-hand side once you finish rolling it.



I-3

# Quick Start 사용자 가이드

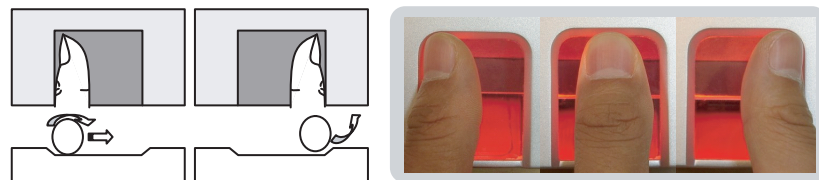
## •지문 입력 방법

1. Flat type device
  - 지문의 중심(Core)이 입력될 수 있도록 입력 면적을 최대한 하고 힘을 고르게 하여 지그시 눌러 주십시오.



2. Roll type device

- 손가락을 왼쪽으로 옮겨 놓은 다음 손가락을 자연스럽게 오른쪽으로 돌려 주시면 됩니다. Rolling이 완료되면 손가락은 진행 방향으로 자연스럽게 떼어 주시면 됩니다.



II-3